

## [2017 PDF free download Latest Cisco 200-310 Exam Questions And Answers, Free Download 200-310 Exam PDF Study Materials At Lead4pass

Latest and most Accurate Cisco **200-310** exam study material and real exam practice questions and answers, Cisco CCDA is the industry leader in information technology, and <http://www.lead4pass.com/200-310.html> getting certified by them is a guaranteed way to succeed with IT careers. We help you do exactly that with our high quality Cisco CCDA Designing for Cisco Internetwork Solutions training materials.

### QUESTION 1

In which phase of PPDIOO are the network requirements identified?

- A. Design
- B. Plan
- C. Prepare
- D. Implement
- E. Operate
- F. Optimize

Correct Answer: B

### QUESTION 2

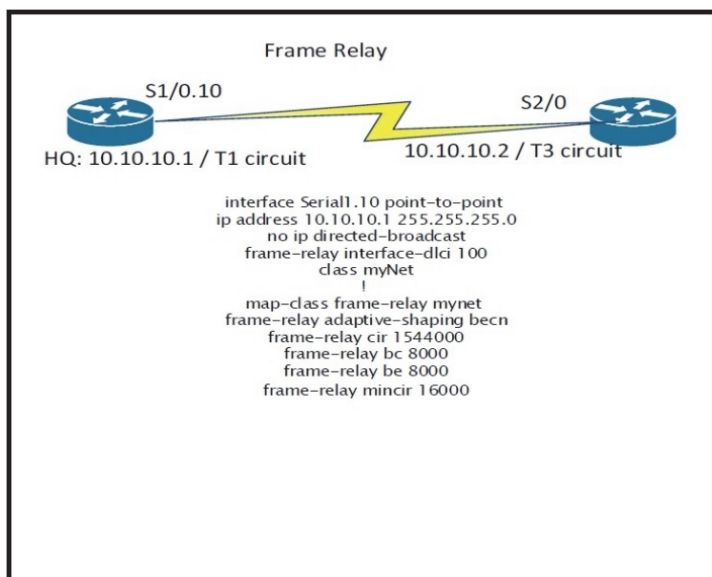
Which IPv6 feature enables routing to distribute connection requests to the **200-310** nearest content server?

- A. Link-local
- B. Site-local
- C. Anycast
- D. Multicast
- E. Global aggregatable

Correct Answer: C

### QUESTION 3

Refer to the exhibit



A network engineer at a technical call center receives a call from a customer complaining that only 56 kbps of data can be transferred over the T1 Frame Relay WAN circuit at a remote site. The engineer checks the Frame Relay switch and confirms that only 56 kbps is being transferred over the circuit. The engineer requests the router configuration of the customer headquarters site

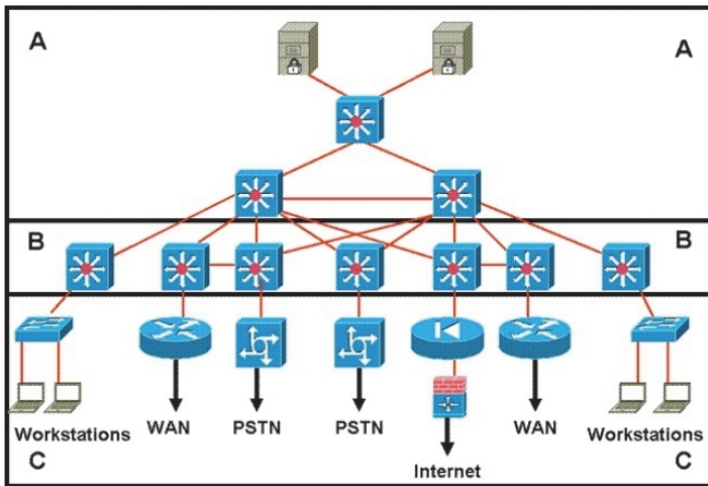
router. What is causing this issue to occur?

- A. The wrong CIR is configured.
- B. The BECN configuration is causing this issue.
- C. The class name is spelled wrong under the interface.
- D. The wrong DLCI number is assigned to the interface.

Correct Answer: C

QUESTION 4

Refer to the exhibit.



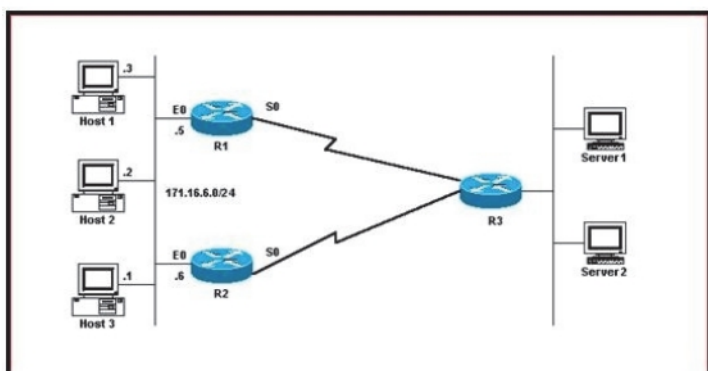
Which layer is the distribution layer?

- A. Layer A
- B. Layer B
- C. Layer C
- D. Layers A and B form a consolidated core and distribution layer

Correct Answer: B

QUESTION 5

Refer to the exhibit.



Which configuration can be used to implement FHRP protocol and load **200-310** balancing at the same time?

- A. R1Interface Ethernet0ip address 171.16.6.5 255.255.255.0standby 1 preemptstandby 1 ip 171.16.6.100standby 1 track Serial0standby 2 preemptstandby 2 ip 171.16.6.200standby 2 track serial 0standby 2 priority 95!!R2interface Ethernet0ip address 171.16.6.6 255.255.255.0standby 1 preemptstandby 1 ip 171.16.6.100standby 1 track Serial0standby 1 priority 95standby 2

preemptstandby 2 ip 171.16.6.200standby 2 track serial 0

B. R1Interface Ethernet0ip address 171.16.6.5 255.255.255.0standby 1 preemptstandby 1 ip 171.16.6.100standby 1 track  
Serial0standby 1 priority 95!!R2interface Ethernet0ip address 171.16.6.6 255.255.255.0standby 1 preemptstandby 1 ip  
171.16.6.100standby 1 track Serial0standby 1 priority 95

C. R1Interface Ethernet0ip address 171.16.6.5 255.255.255.0standby 1 preemptstandby 1 ip 171.16.6.100standby 1 track  
Serial0standby 1 priority 95standby 2 preemptstandby 2 ip 171.16.6.200standby 2 track serial 0standby 2 priority 95!!R2interface  
Ethernet0ip address 171.16.6.6 255.255.255.0standby 1 preemptstandby 1 ip 171.16.6.100standby 1 track Serial0standby 2  
preemptstandby 2 ip 171.16.6.200standby 2 track serial 0

D. R1Interface Ethernet0ip address 171.16.6.5 255.255.255.0standby 1 preemptstandby 1 ip 171.16.6.100standby 1 track  
Serial0standby 1 priority 95!!R2interface Ethernet0ip address 171.16.6.6 255.255.255.0standby 1 preemptstandby 1 ip 171.16.6.100

Correct Answer: A

#### QUESTION 6

What two factors should be considered when deploying an enterprise campus network? (Choose two.)

- A. employees
- B. geography
- C. applications
- D. administration
- E. throughput

Correct Answer: BC

#### QUESTION 7

Which network layer is the best fit for security features such as DAI and DHCP snooping?A. campus core

- B. enterprise edge
- C. campus distribution
- D. remote-access VPN
- E. enterprise data center
- F. campus access

Correct Answer: F

#### QUESTION 8

A network engineer requires that an OSPF ASBR must only **200-310** flood external LSAs only within its own area. What OSPF area type should be configured?

- A. Backbone Area
- B. Totally Stub Area
- C. Not So Stubby Area
- D. Stub Area

Correct Answer: C

#### QUESTION 9

A network engineer requires that an OSPF ASBR must only flood external LSAs only within its own area. What OSPF area type should be configured?

- A. Backbone Area
- B. Totally Stub Area
- C. Not So Stubby Area
- D. Stub Area

Correct Answer: C

#### QUESTION 10

Which statement is true concerning the data center access layer design?

- A. The access layer in the data center is typically built at Layer 3, which allows for better sharing of services across multiple servers.
- B. With Layer 2 access, the default gateway for the servers can be configured at the access or aggregation layer.
- C. A dual-homing NIC requires a VLAN or trunk between the two access switches to support the dual IP addresses on the two server links to two separate switches.
- D. The access layer is normally not required, as dual homing is standard from the servers to the aggregation layer.

Correct Answer: B

Read more: <http://www.lead4pass.com/200-310.html> The latest Cisco 200-310 practice questions and answers covers all the knowledge points of the real exam. We update our product frequently so our customer can always have the latest version of the brain dumps. We have the most professional expert team to back up our grate quality products. If you still cannot make your decision on purchasing our product, please try our free demo.

Reference: <http://www.cisco.com/c/en/us/training-events/training-certifications/exams/current-list/200-310-desgn.html>

Download free Cisco 200-310 exam pdf files: <https://drive.google.com/open?id=0B7LFs7RuvDV4bTIYazRsTXJfdIE>